A graphic with a blue background and white text. The text reads "EasyRead MRI PATIENT INFORMATION". The background of the entire page shows a woman in blue scrubs adjusting a patient in an MRI machine. The patient is smiling and looking up. A Siemens logo is visible on the machine's exterior. A digital display on the machine shows "096 Imm".

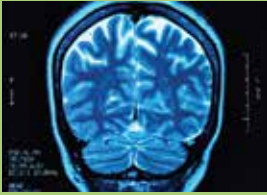
EasyRead
MRI PATIENT
INFORMATION



www.inhealthgroup.com/services/mri-scan

Tel: 0333 202 0300

MRI PATIENT INFO



An MRI scan takes pictures of inside your body. It is safe and painless.



A strong magnet is used to create the pictures.



You will be asked to remove any jewellery or items in your pockets.



You may be asked to take off some of your clothes and put on a gown.



Your relative or carer can stay near to you during the scan.

An MRI scanner is a large, hollow tube open at both ends.



You will need to lie flat and keep very still for your scan.

A piece of equipment may be placed over the body area being scanned, this is like a camera helping to take the pictures.



The scanner makes a noise but you will be given something to protect your ears.



The person doing the scan will be able to talk to you between scans.



If you want to stop, you can press a buzzer at any time.



If you do not like the feeling of being in the scanner just close your eyes. Try and relax and keep very still.



The scan may take 20-40 minutes in total.



Once the scan is finished you can go home and carry on your day as normal.



Your doctor will get the results and tell you what to do next.